

STOREFRONT DETAIL

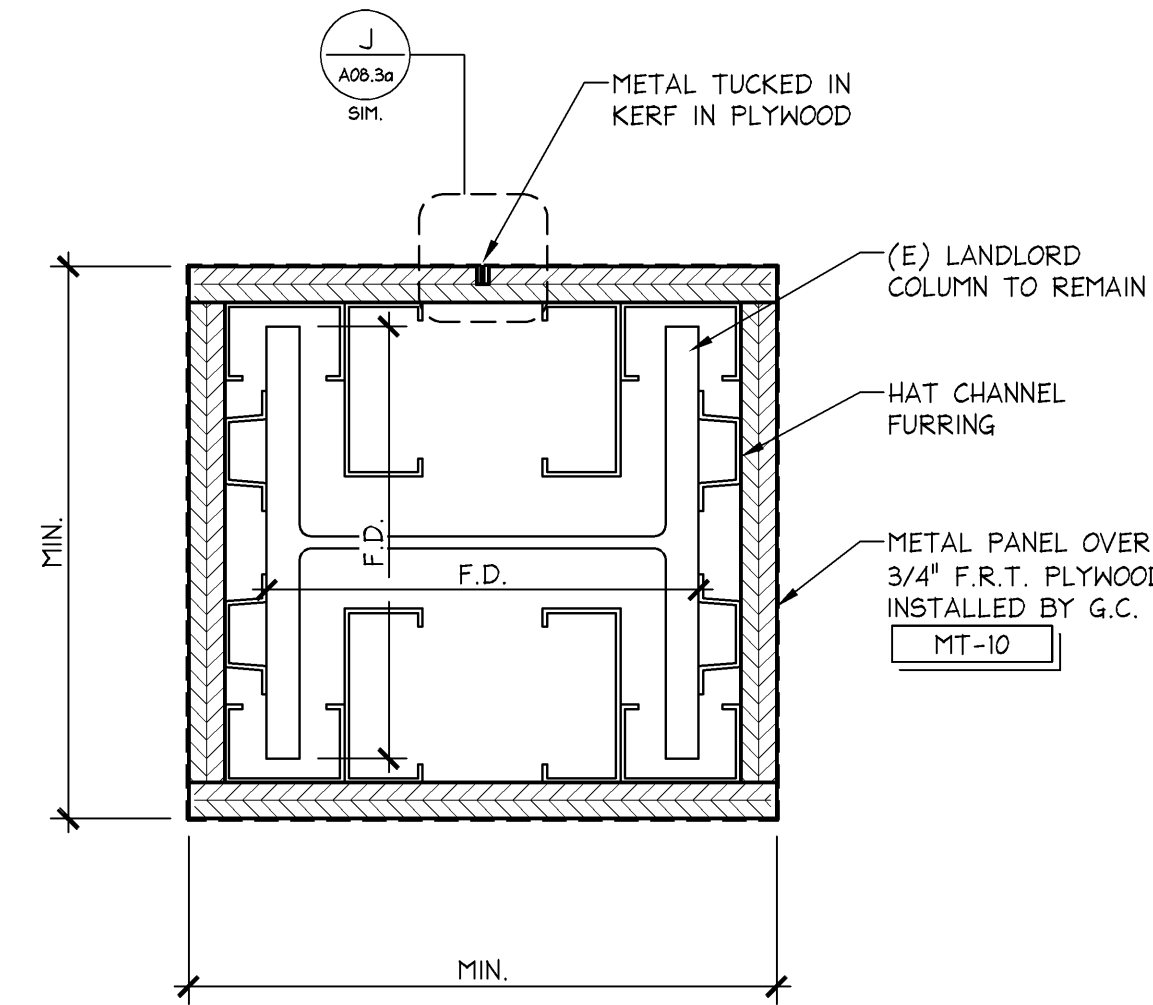
6" = 1'-0"

M

COLUMN WRAP @ STOREFRONT

3" = 1'-0"

J



COLUMN WRAP @ STOREFRONT

3" = 1'-0"

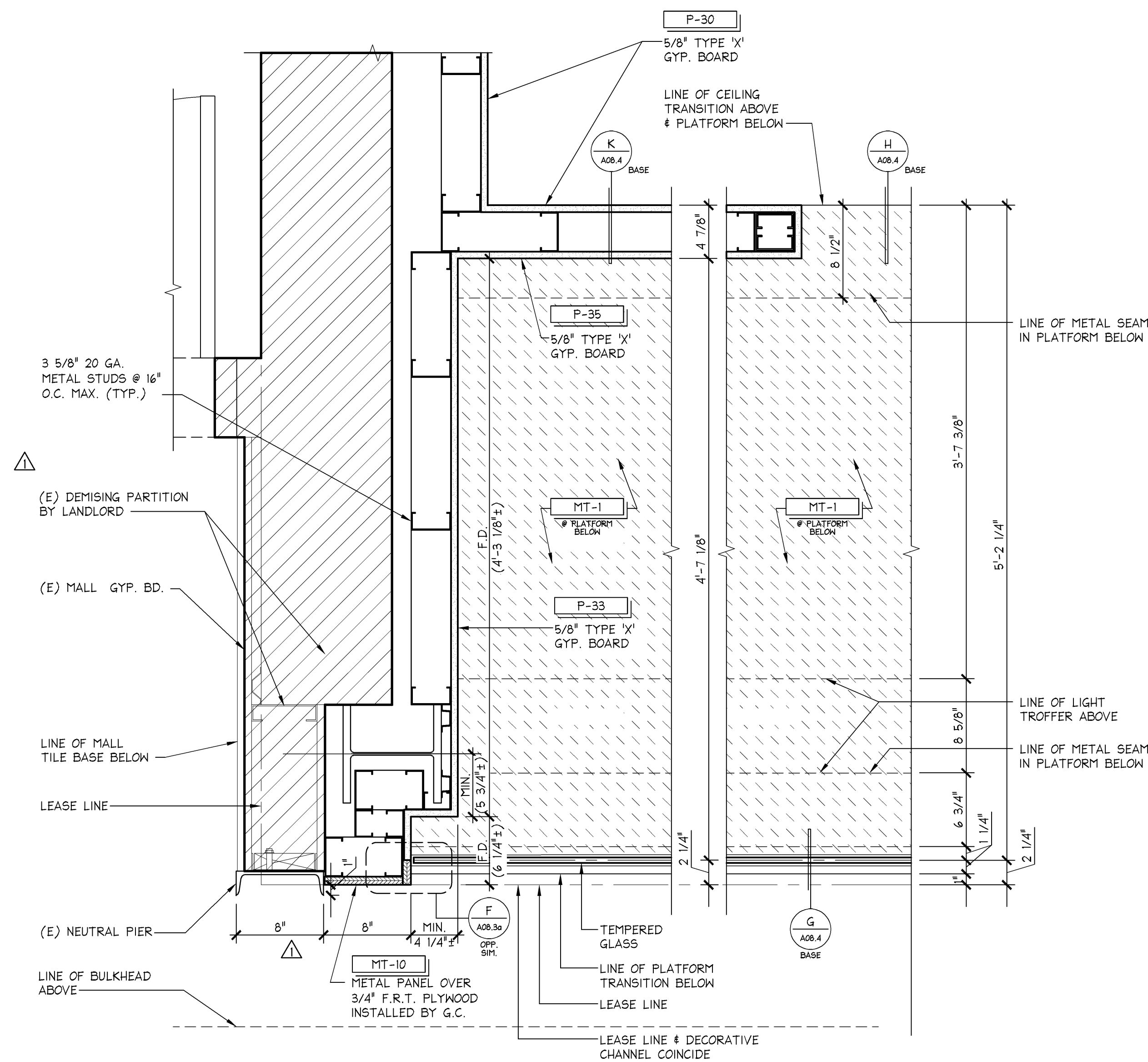
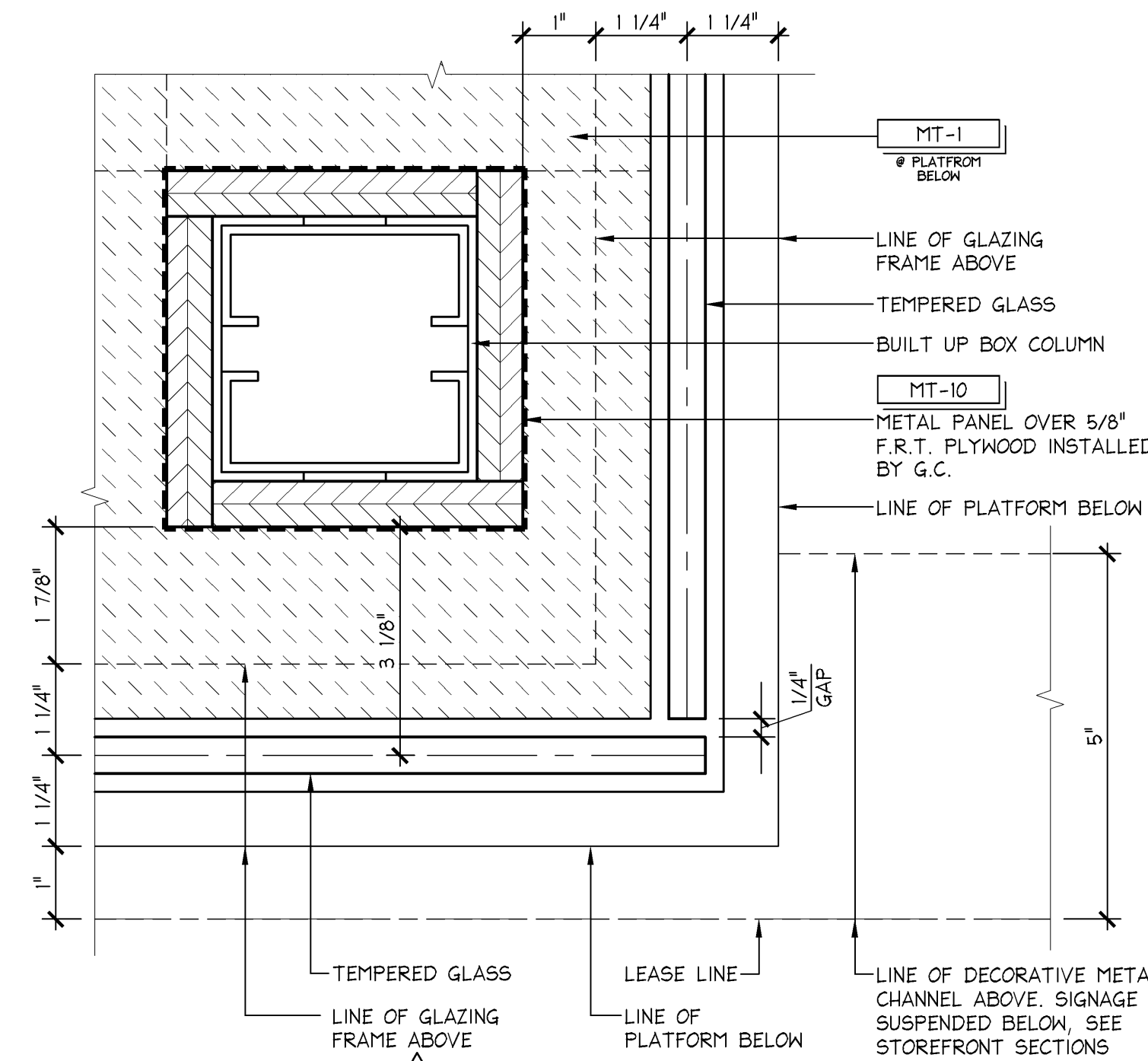
F

STOREFRONT DETAIL

6" = 1'-0"

C

TYPICAL WALL SURFACE BACKING  
FOR MT-10 - F.R.T. PLYWOOD  
COMPLIES WITH IBC 603.1 ITEM 6



STOREFRONT DETAIL @ MEN'S  
SHOPPING ROOM (NEUTRAL PIER)

1 1/2" = 1'-0"

G

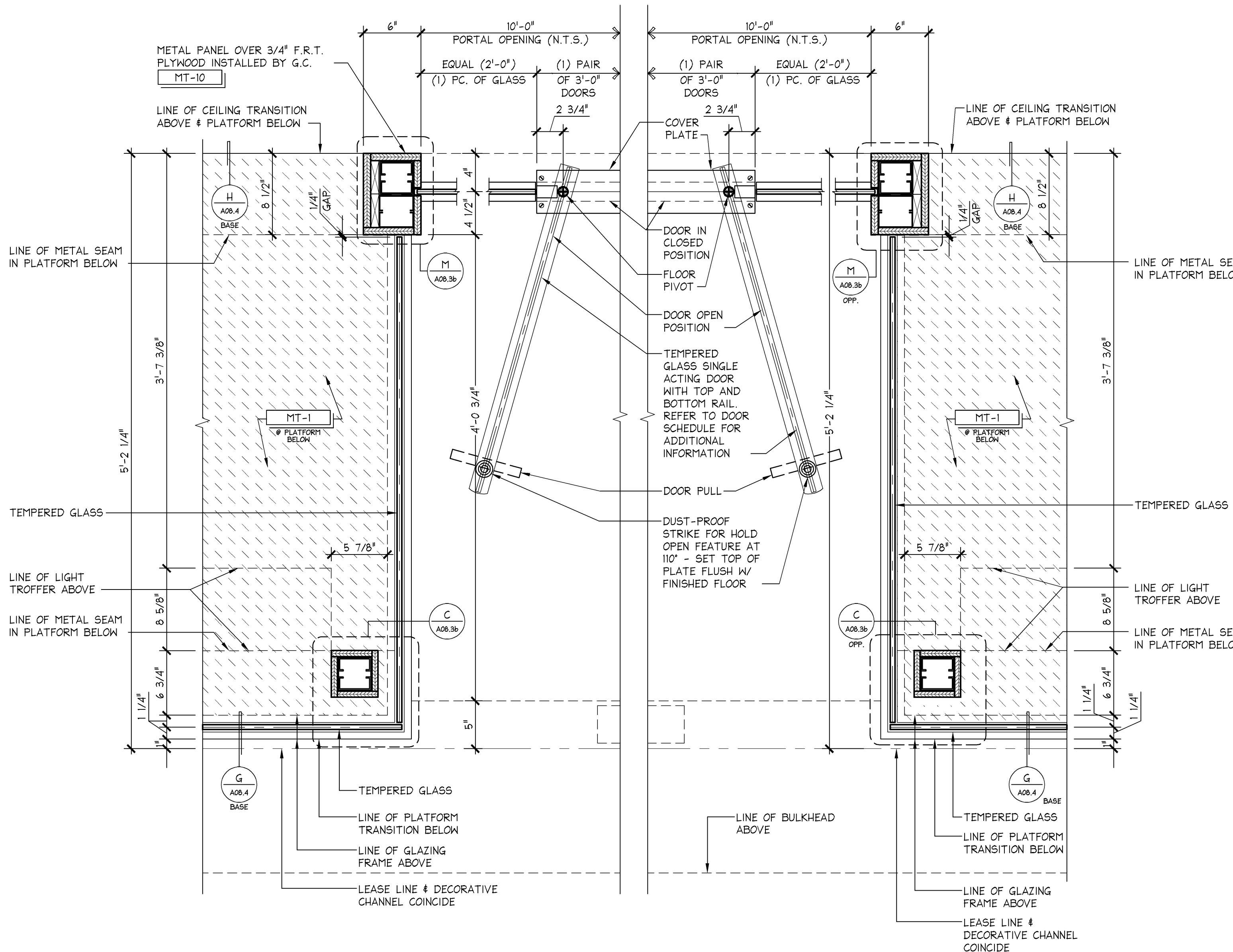
STOREFRONT DETAIL @ MEN'S  
SHOPPING ROOM (ENTRY)

1 1/2" = 1'-0"

A

ALLOW 1/2" GAP IN PLATFORM  
SURFACE PLYWOOD AT ALL  
VERTICAL ELEMENTS FOR  
METAL TUCK

REFER TO STRUCTURAL DRAWINGS  
FOR ALL STOREFRONT FRAMING,  
NOTES AND DETAILS



712

PROJECT INFORMATION:  
**EXPRESS**  
SPRINGFIELD TOWN CENTER  
8844 C.C. CO. 6847  
SPRINGFIELD, VA 22150  
NEW PACKAGE: 94869 J/A/E PROJECT #:  
DESIGN TYPE: ESD&C PROJECT #:  
REVISIONS:  
1. REVISED BY: 03/13/14  
2. REVISED BY: 04/09/14

SHREMSHOCK  
Shremshock Architects, Inc.  
6106 S. Sandusky Rd. Westerville, OH 43081  
PHONE: 979-385-0712  
FAX: 614-545-4550  
Gerald S. Shremshock, Architect  
Timothy J. Shremshock, Architect

ELITE CONSTRUCTION GROUP  
LAKE JACKSON, TX  
PHONE: 979-385-0712  
NOTE: THESE PRINTS HAVE BEEN  
REDUCED BY 50 PERCENT. SCALE  
WILL BE 50 PERCENT OF WHAT IS  
NOTED ON PLANS

DATE ISSUED: 02/14/2014  
DESIGNED BY: JJB  
DRAWN BY: ACB/KMG  
CHECKED BY: KMM

STOREFRONT  
DETAILS

DRAWING NUMBER:  
**A08.3b**

PKG. B  
FALL 2014  
130832

EXPRESS FASHION OPERATIONS, LLC  
d/b/a STORE DESIGN & CONSTRUCTION  
1 Express Drive Columbus, Ohio 43230  
Telephone: 614.474.4001 Express.com